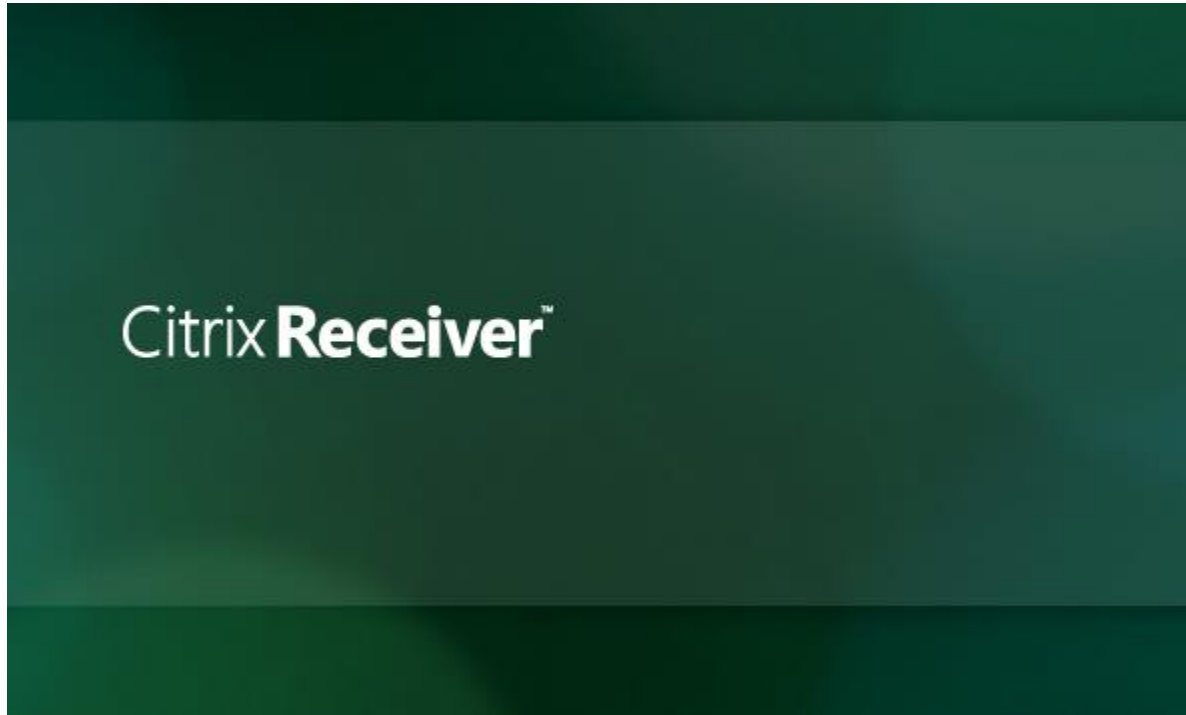


“DevereuxApps”

cloud.devereux.org

Convenient access to your Devereux applications from a laptop, PC, smart phone, tablet or other mobile device using Citrix Receiver.



With DevereuxApps (cloud.devereux.org), your “favorite” application icons sync to every device. -- LET’S GET STARTED!

Choose from the following devices:

[Windows PC or Laptop](#)

[Apple iPhone](#)

[Apple iPad and iPad mini](#)

[ChromeOS / Chromebook](#)

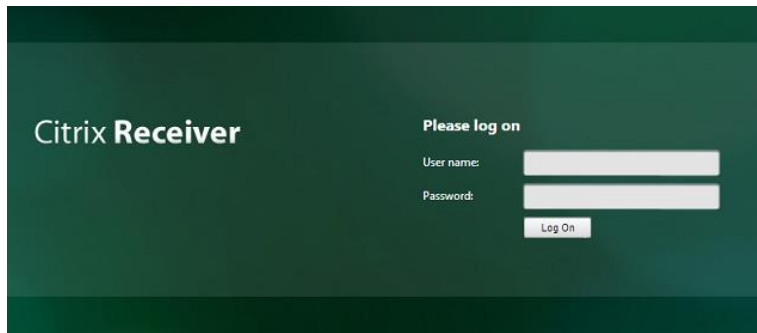
[Android Phone \(Coming Soon\)](#)

[Android Tablet \(Coming Soon\)](#)

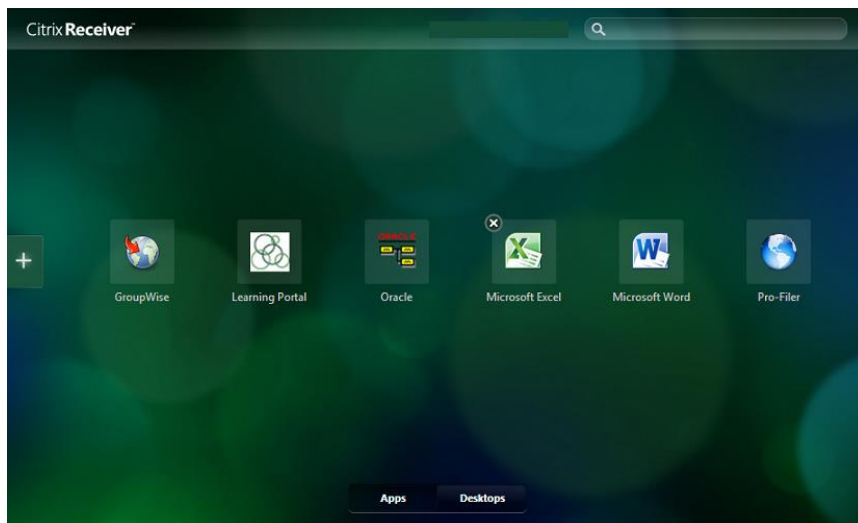
WINDOWS PC OR LAPTOP – Two Options

Option 1 – Web browser (requires Receiver client)

1. Launch your web browser (Internet Explorer, Chrome, Firefox, etc.).
2. Type the following address and hit ENTER: cloud.devereux.org
3. Login with your network username and password.



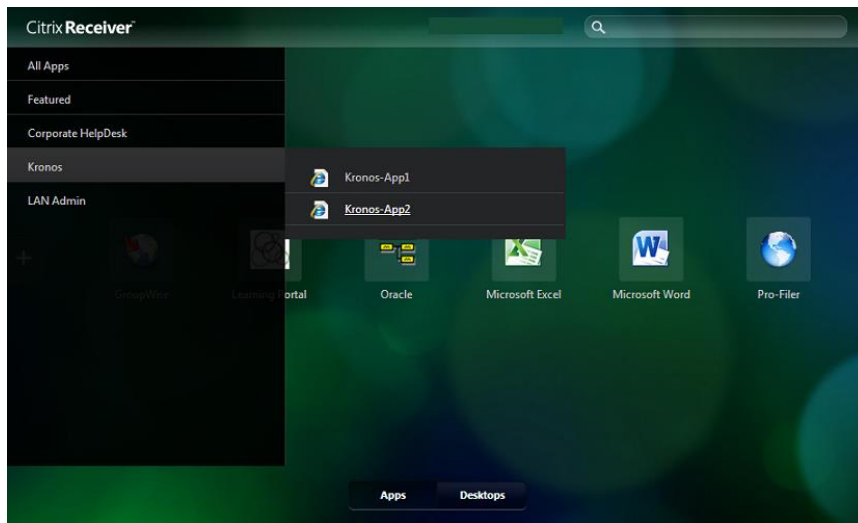
4. If prompted to install the Citrix Receiver client, follow the on-screen instructions. (alternative Citrix Receiver install instructions below in Option 2)
5. Once logged in, you should see a small list of common applications.



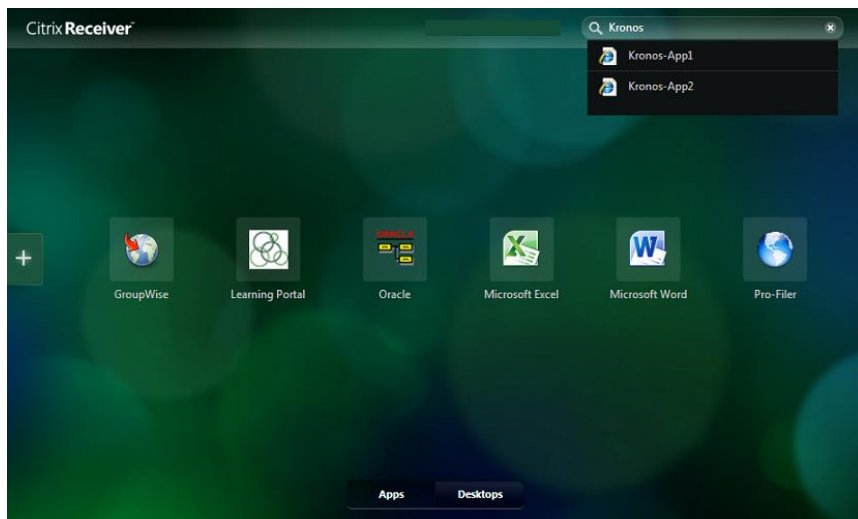
Click the + plus sign on the left side to find and add additional “favorite” applications. Once you locate an application you want (see image below), click the name of the application and an icon will drop to your “virtual desktop.” Repeat this process for each application you want to appear on your virtual desktop.

To remove an application from your virtual desktop, hover your mouse near the upper left corner of the icon and an (X) should appear (see Microsoft Excel icon in image

above). Click the (X) to remove the icon.



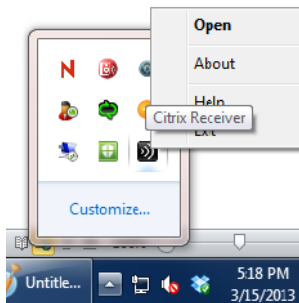
You can also search for icons instead of using the + plus sign. Click in the search box on the top right and start typing.



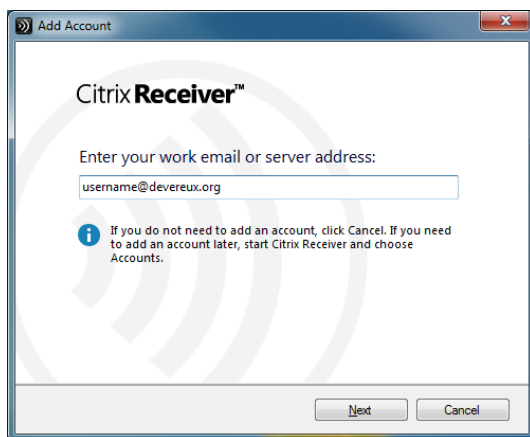
6. To launch an application, click on the application's icon on your virtual desktop.
7. Next time you login (from any device), your favorite application icons will be remembered.

Option 2 – Receiver Client only (no browser)

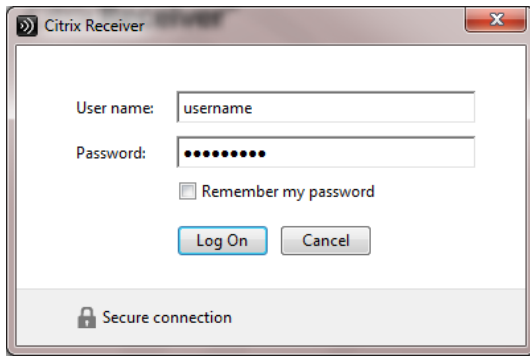
1. Launch your web browser (Internet Explorer, Chrome, Firefox, etc.).
(browser only required for initial Receiver client install)
2. Type the following address and hit ENTER: www.citrix.com/downloads/citrix-receiver.html
(Alternatively, do a Google search for “download citrix receiver” and click the first result.)
3. Click on “Detect my device and install Receiver” and follow the on-screen instructions.
4. After Receiver is installed, find the Receiver icon in your system tray (it could be hidden to the left of the clock).



5. Right-click the Receiver icon (black with radio waves) and choose “Open”.
(Alternatively, find the Receiver icon in the Start menu and left-click it.)
6. Type your Devereux email address (username@devereux.org) and click Next.
(Alternatively, you can type “cloud.devereux.org” without the quotes.)



7. Enter your network username and password and click Log On



8. Click Yes when asked: Do you want to use information provided by “DevereuxApps”?



9. After the account has been added successfully, click Finish.

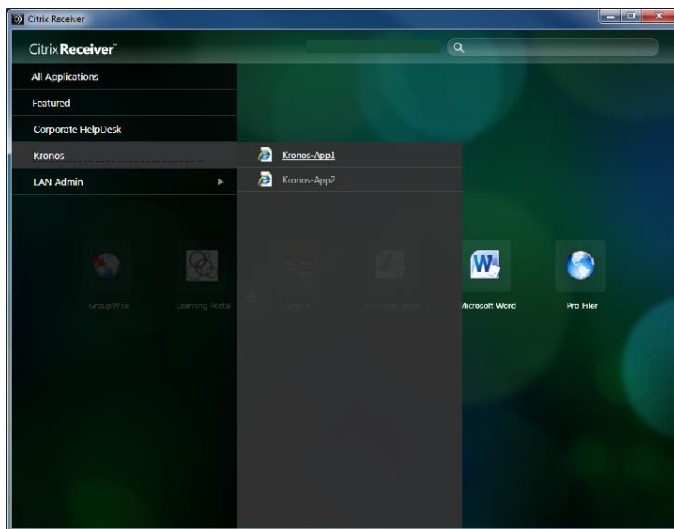
10. Enter your network username and password again and click Log On.

11. Once logged in, you should see a small list of common applications.



Click the + plus sign on the left side to find and add additional “favorite” applications. Once you locate an application you want (see image below), click the name of the application and an icon will drop to your “virtual desktop.” Repeat this process for each application you want to appear on your virtual desktop.

To remove an application from your virtual desktop, hover your mouse near the upper left corner of the icon and an (X) should appear (see Microsoft Excel icon in image above). Click the (X) to remove the icon.



You can also search for icons instead of using the + plus sign. Click in the search box on the top right and start typing.



12. To launch an application, click on the application's icon on your virtual desktop.
13. Next time you login (from any device), your favorites will be remembered.
14. To login again, right-click the Receiver icon in the system tray and choose "Open".
(Alternatively, find the Receiver icon in Start menu and click it.)

APPLE IPHONE

1. If you don't have the Citrix "Receiver" app installed, find and tap the "App Store" icon.
2. Tap the Search button at the bottom.
3. Type "Citrix Receiver" in the Search box at the top and tap the Search button.



4. Tap the "INSTALL" button to install.
5. After Receiver installs, find and tap the "Receiver" app icon.
6. If presented with an "Add Account" button, tap it.
(Otherwise, tap the top, left "person" button and then tap the top, right + plus button to add an account.)



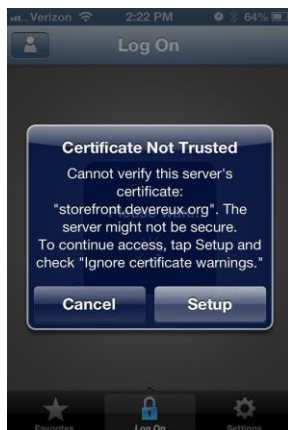
7. Type your Devereux email address (username@devereux.org) and tap Next.
(Alternatively, you can type "cloud.devereux.org" without the quotes.)



8. Type your network username and password. Type “devereux” (no quotes) for the Domain. Tap the Log On button.



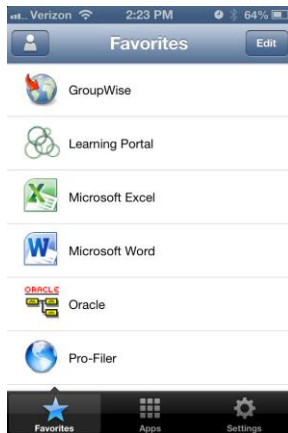
9. If you get a “Certificate Not Trusted” warning, tap the Setup button, set “Ignore certificate warnings” to On. Tap Save. Tap OK.



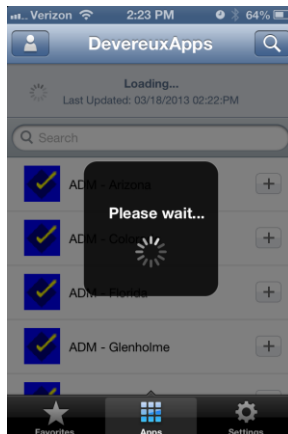
10. You may be prompted for your network username and password again.

11. After a few seconds of “Please Wait” and/or “Loading” you should see a list of applications in the “Apps” page. You should also see a few common applications appear by default in the Favorites page. If you have added additional favorite applications on another device, those applications should also appear.)

Tap any application on the Favorites page to launch that application.



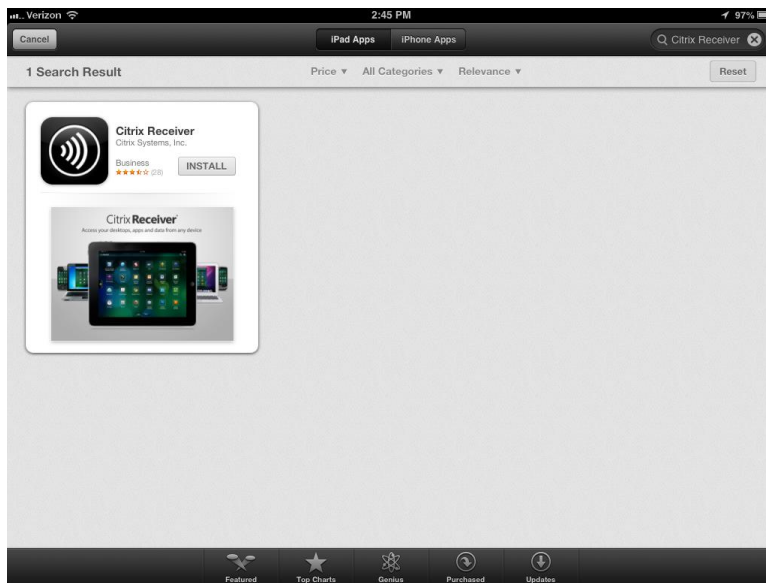
12. On the “Apps” page, tap applications to add them to your “Favorites” page (bottom, left). To refresh the list of applications on the “Apps” page, tap, hold and drag the application list down. This will also refresh your list of Favorites (if any changes have been made since your last logon). It will also reveal a search box to search for applications.



13. Next time you login (from any device), your favorites will be remembered.

APPLE IPAD AND IPAD MINI

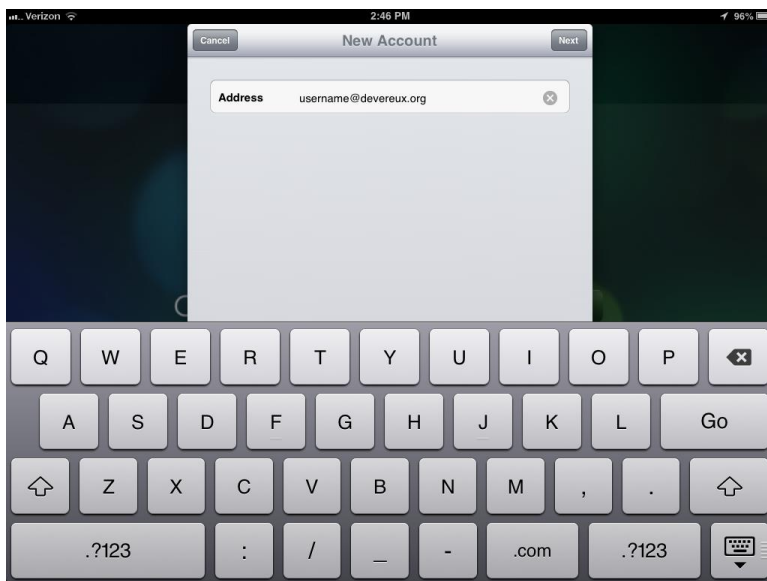
1. If you don't have the Citrix "Receiver" app installed, find and tap the "App Store" icon.
2. Tap the Search box on the top, right and type "Citrix Receiver" and tap the Search button.
3. Tap the "INSTALL" button to install.



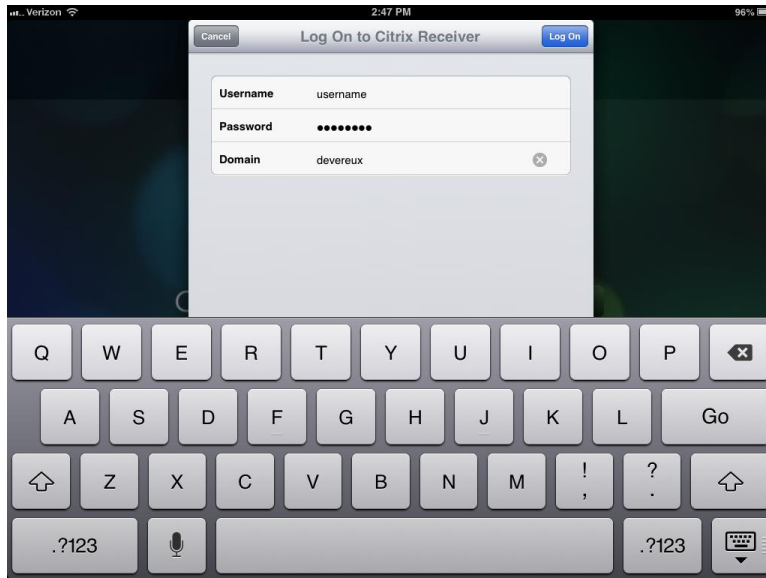
4. After Receiver installs, find and tap the "Receiver" app icon.
5. If presented with an "Add Account" button, tap it.
(Otherwise, tap the top, left "person" button and then tap the top, right + plus button to add an account.)



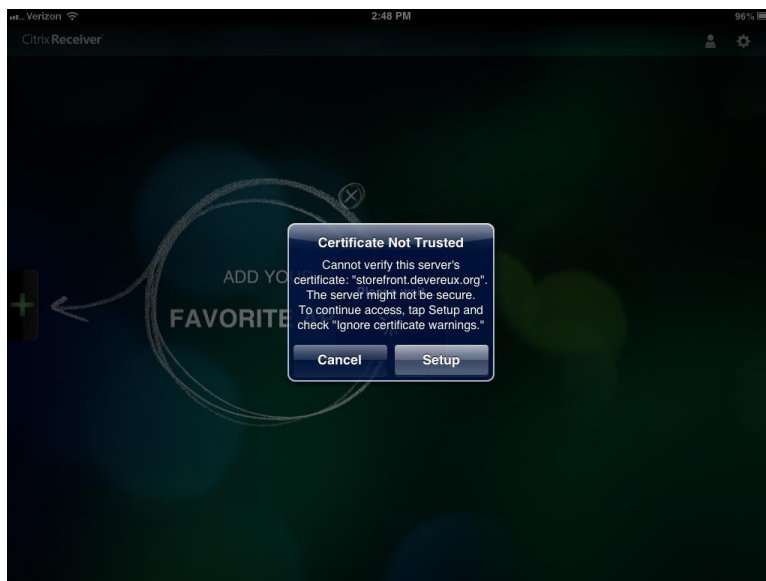
6. Type your Devereux email address (username@devereux.org) and tap Next. (Alternatively, you can type “cloud.devereux.org” without the quotes.)



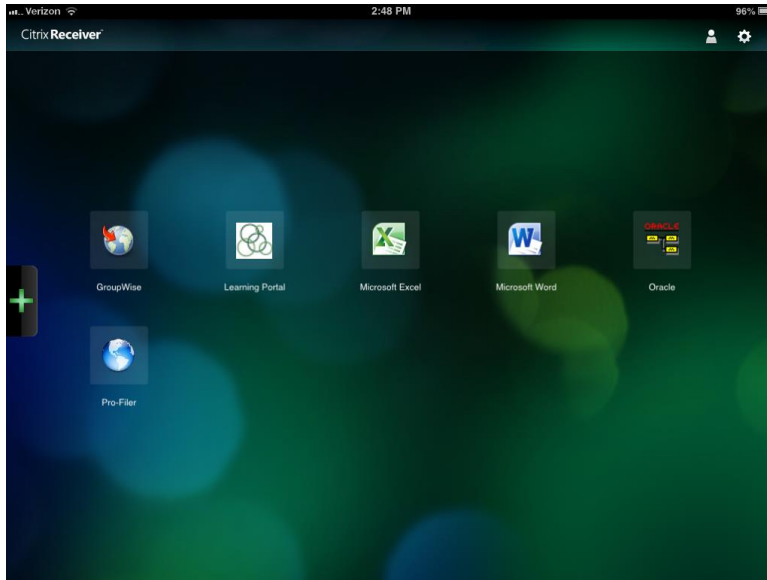
7. Type your network username and password. Type “devereux” (no quotes) for the Domain. Tap the Log On button.



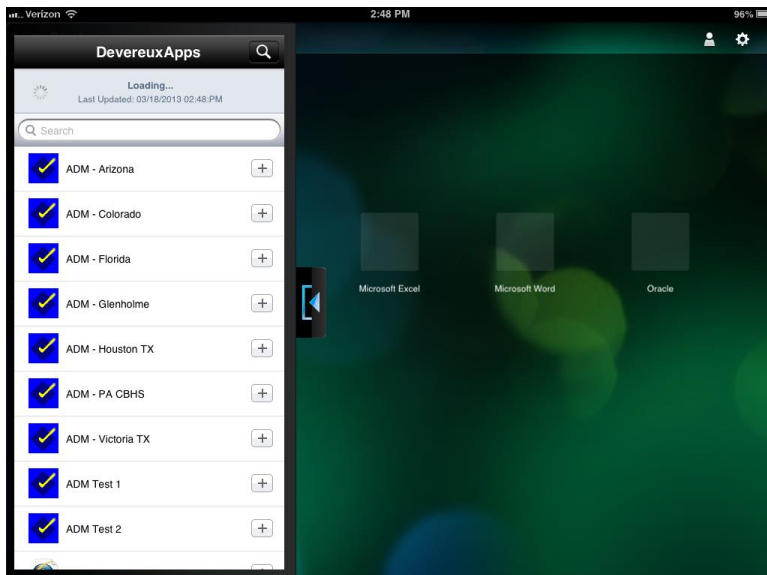
8. If you get a “Certificate Not Trusted” warning, tap the Setup button, set “Ignore certificate warnings” to On. Tap Save. Tap OK.



9. You may be prompted for your network username and password again.
10. After a few seconds of “Please Wait” and/or “Loading” you should see a list of applications icons on your virtual desktop.
(A few common icons appear by default. If you have added additional favorite icons on another device, those icons should appear well.)



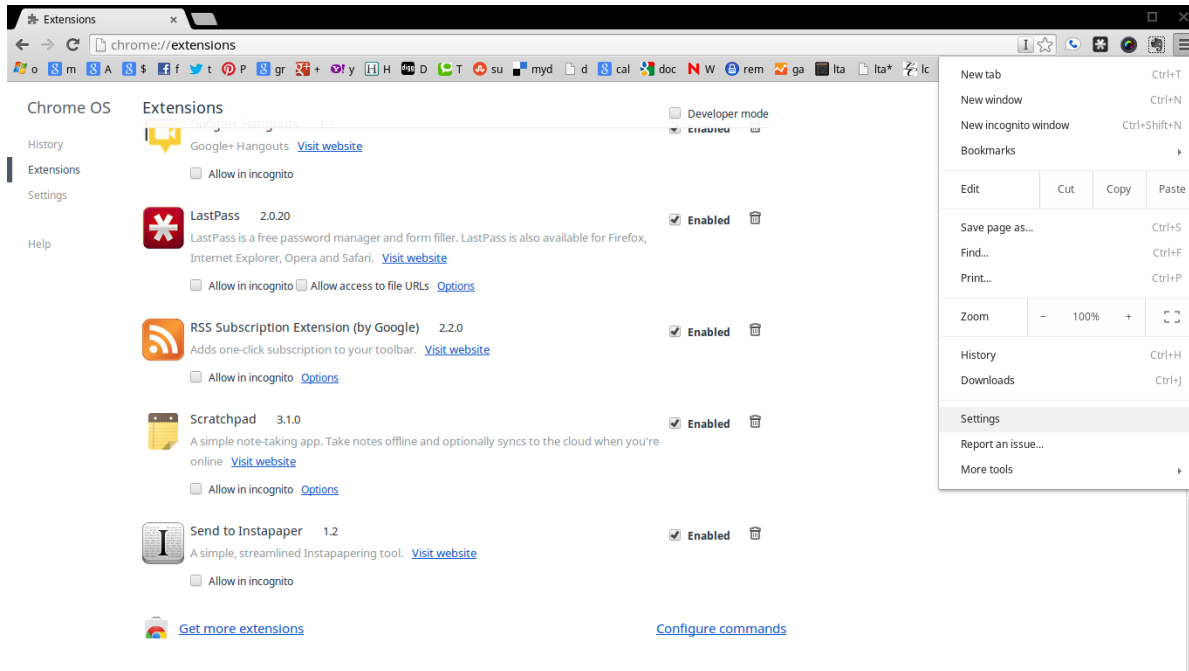
11. Tap the + plus button on the left to browse for applications.
12. Tap an application to add it as a favorite on your virtual desktop.
13. Tap the new icon on the virtual desktop to launch that application.
14. To refresh the list of available applications, tap the + plus button on the left, and then drag the application list down. This will also refresh your list of Favorites (if any changes have been made since your last logon). It will also reveal a search box to search for applications.



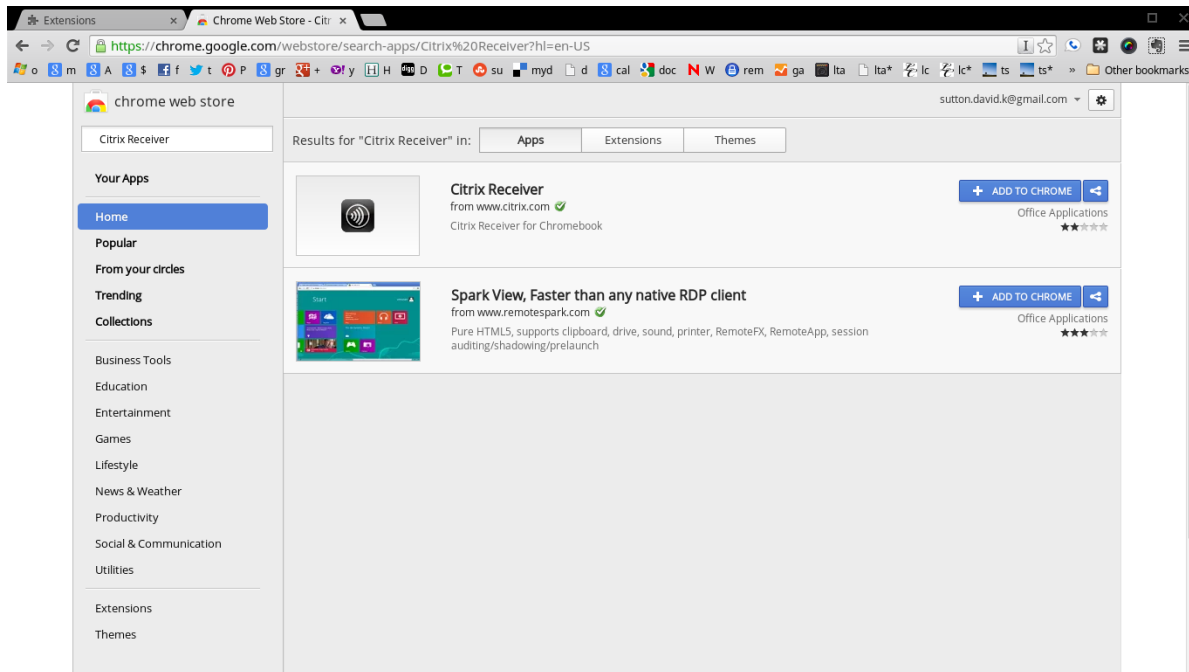
15. Next time you login (from any device), your favorites will be remembered.

CHROMEOS / CHROMEBOOK

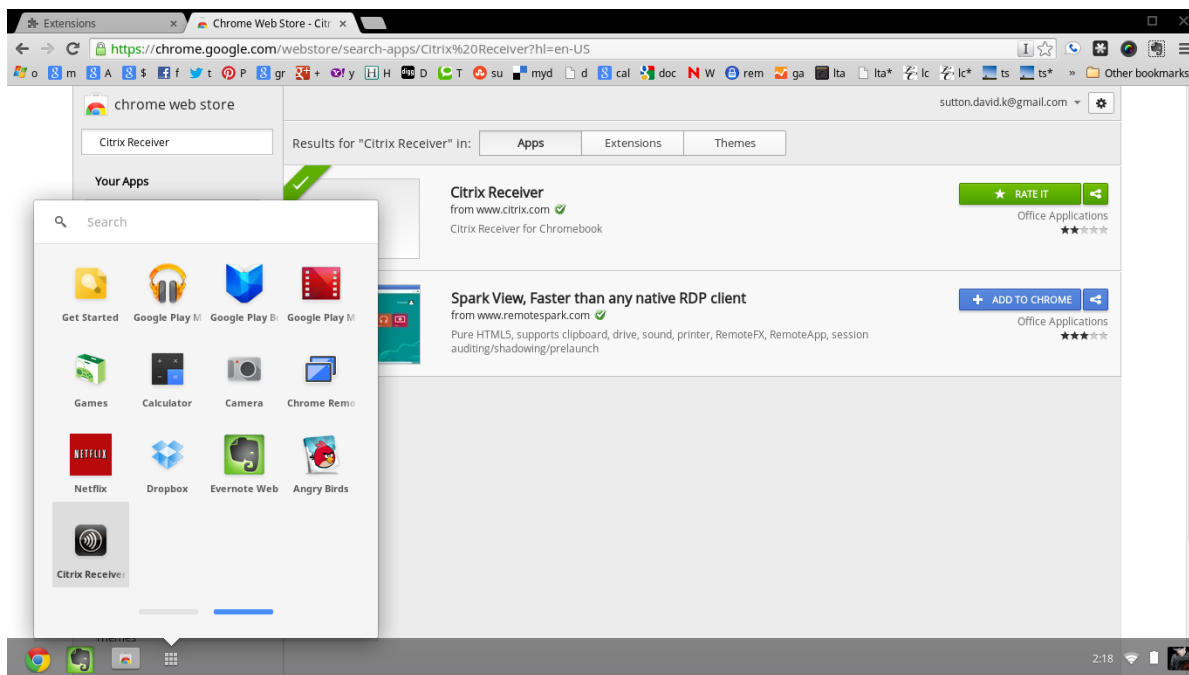
1. If you do not have the Citrix Receiver Extension for Chrome installed, launch Chrome and then go to Settings | Extensions (see image below). Scroll down to the bottom and click “Get more extensions.”



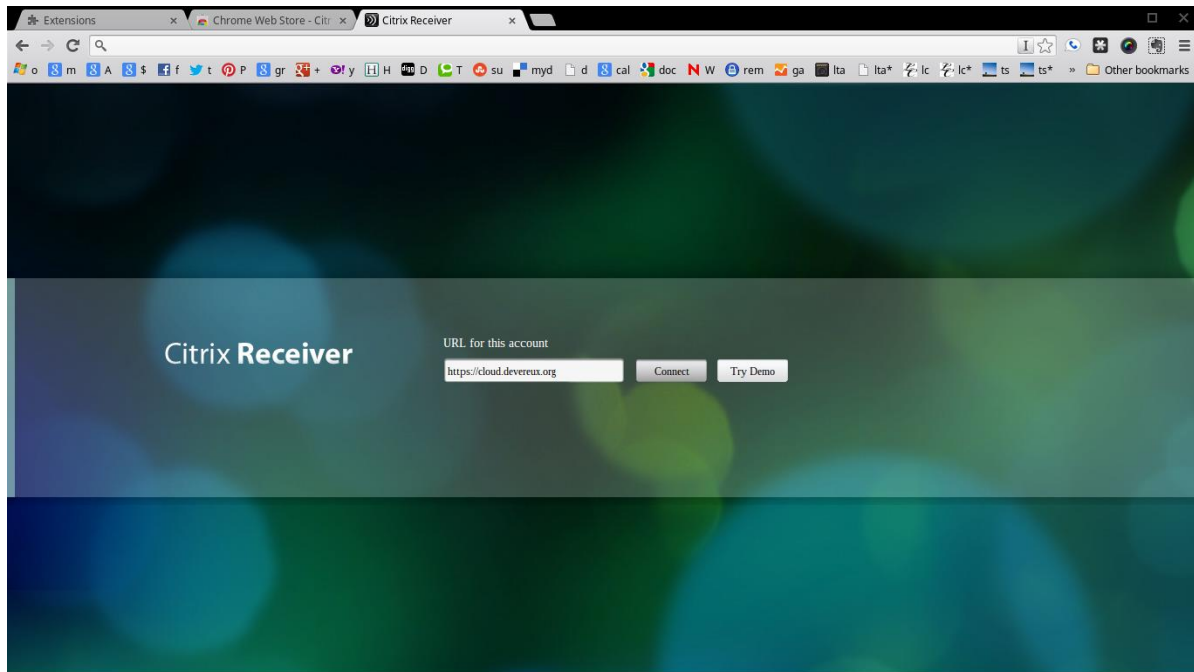
2. Type “Citrix Receiver” in the search box and hit ENTER. Then click the “Apps” button.



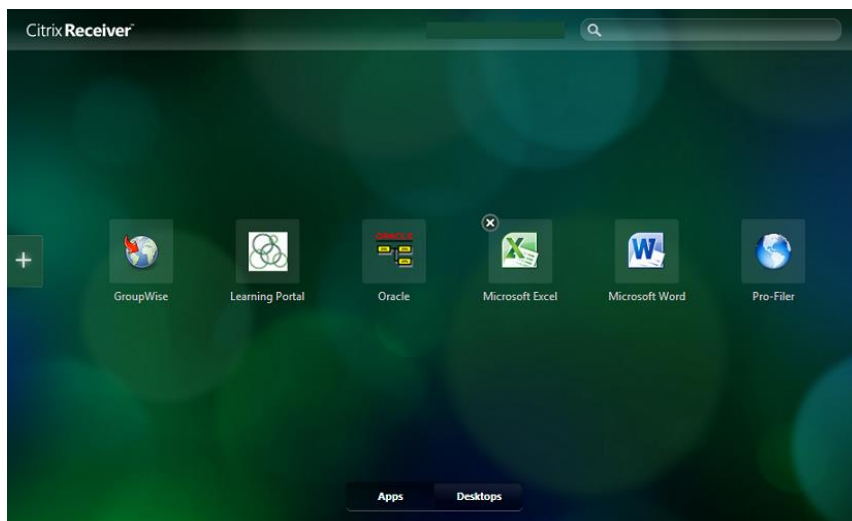
3. Click “ADD TO CHROME” next to Citrix Receiver.
4. Citrix Receiver should now appear in your Apps menu.



5. Click the Citrix Receiver icon and type the following in the “URL for this account” field and click Connect: <https://cloud.devereux.org>

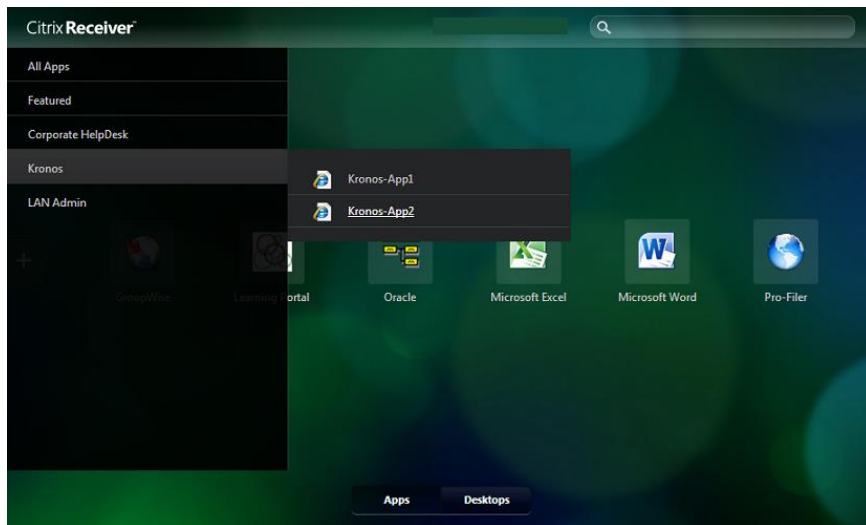


6. Receiver will remember what you typed in the URL field for future use.
7. For convenience, you can pin the Citrix Receiver icon to your Launcher (the area to the left of the Apps icon). Using the touchpad, tap the Citrix Receiver icon with two fingers to bring up the menu options and choose “Pin to Launcher”.
8. Once logged in, you should see a small list of common applications.

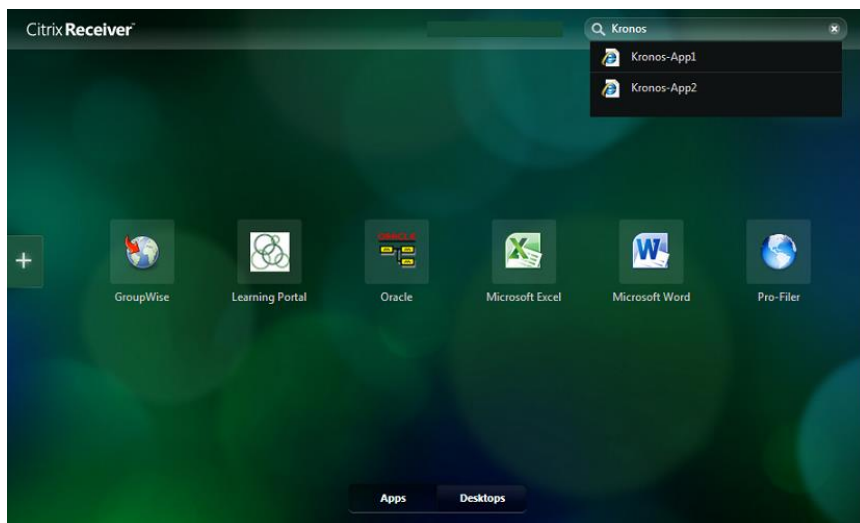


Click the + plus sign on the left side to find and add additional “favorite” applications. Once you locate an application you want (see image below), click the name of the application and an icon will drop to your “virtual desktop.” Repeat this process for each application you want to appear on your virtual desktop.

To remove an application from your virtual desktop, hover your mouse near the upper left corner of the icon and an (X) should appear (see Microsoft Excel icon in image above). Click the (X) to remove the icon.



You can also search for icons instead of using the + plus sign. Click in the search box on the top right and start typing.



9. To launch an application, click on the application's icon on your virtual desktop.
10. Next time you login (from any device), your favorite application icons will be remembered.

ANDROID PHONE

Coming Soon

ANDROID TABLET

Coming Soon